

Shoretel/Mitel Connect Install

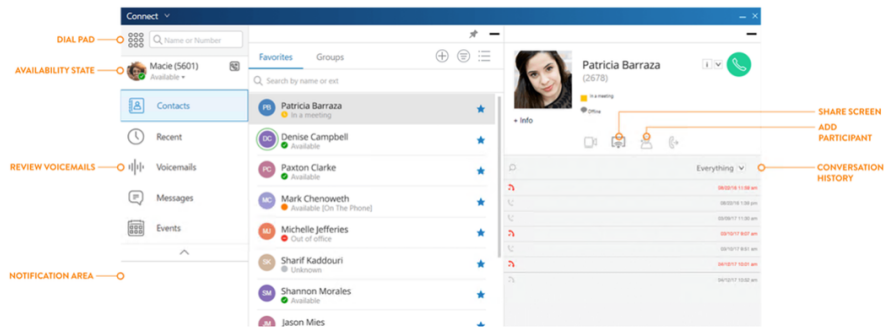
1. Visit the link [Mitel Connect Download](#) to download the mitel connect app. Choose Install for Windows unless you are installing this on a Mac

Mitel Connect

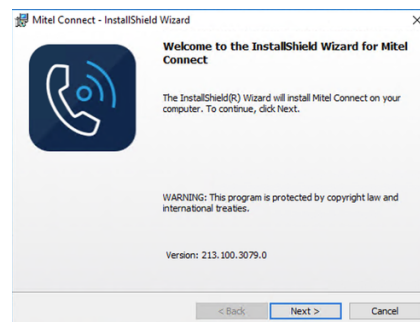
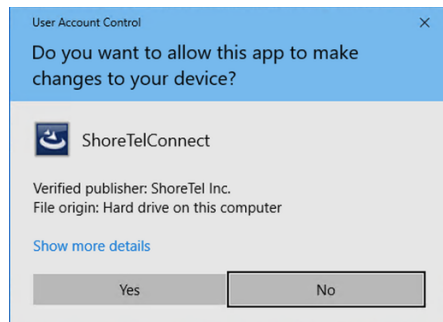
However you work, it keeps you connected

Download Connect for MAC

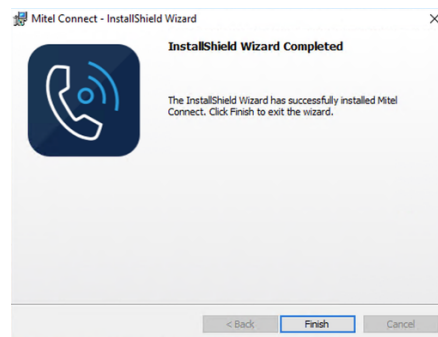
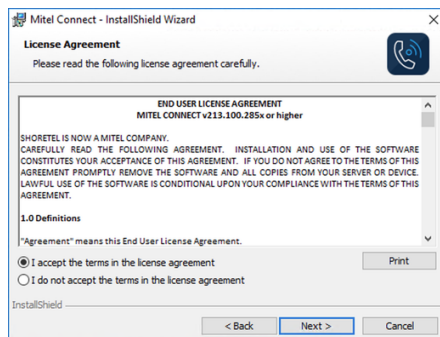
Download Connect for Windows



2. Open the Connect installer from the location you saved it on your computer. Click Yes to the “allow this app to make changes” prompt. Click “Next” button.



3. Click to “accept the terms”, click “Next” and then click “Finish” once it is done running



4. Locate the Mitel Connect shortcut on your desktop and double click it to open.



5. Click the Blue text that reads "Show advanced"

A screenshot of the Mitel Connect login window. The window has a dark blue header with the Mitel Connect logo and title. Below the header, there are two input fields: "Email or username" with the placeholder text "Email (name@example.com)" and "Password" with the placeholder text "Password". Below these fields is a blue dropdown menu labeled "Show advanced" with a downward arrow. A red arrow points to this dropdown menu. Below the dropdown is a checkbox labeled "Remember me" which is currently unchecked. At the bottom of the form is a blue "Login" button.

6. Locate the "server" blank at bottom and enter in that blank: voicemail.adrian.edu
Click the box next to the "Remember Me" and then click "Login"

A screenshot of the Mitel Connect login window with the "Show advanced" dropdown menu expanded. The expanded menu shows several options: a checked checkbox for "Use Windows Credentials", a "Domain" input field containing "AC.ADRIAN.EDU", and a "Server" input field containing "voicemail.adrian.edu". A red arrow points to the "Server" input field. Below the "Server" field is a checkbox labeled "Remember me" which is currently unchecked. A red arrow points to this checkbox. At the bottom of the form is a blue "Login" button.